



Knee & Lumbar Recovery Device (L K R D 2000)

This is not just a traction device.....



A) Hygiene and prevention of joint pain



B) Rehabilitation and repair of spinal cord injuries



C) Providing mental energy





Has a variety of programs for stretching the trunk and lower torso joints

Helps relieve back and knee pain

Repair and reconstruction of spinal cord injuries

Helps to eliminate thrombosis and blood clots and provides concentration of cerebrospinal fluid

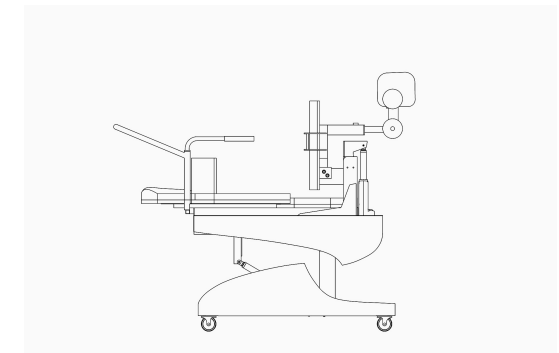
Helps prevent strokes, heart attack and pulmonary embolism and completely eliminate depression

Boosts the immune system, cardiovascular and respiratory system

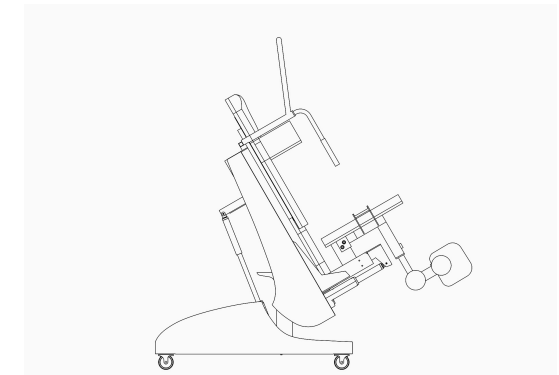
Reduces tingling, hot and cold soles due to blood, hormonal and neurological problems

Relieves shoulder girdle muscle cramps and strengthen cervical and brachial plexus

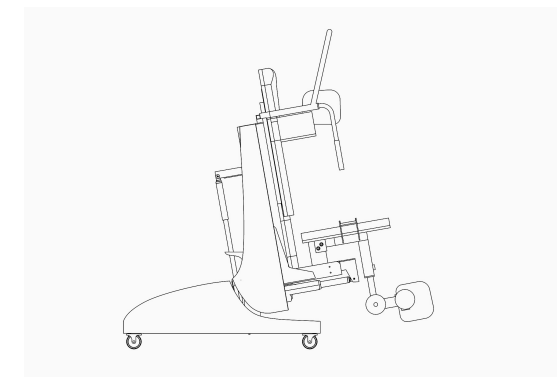
Relieves burning and shaking of hands



The angle of rotation = 0 °
(Stretching mode)



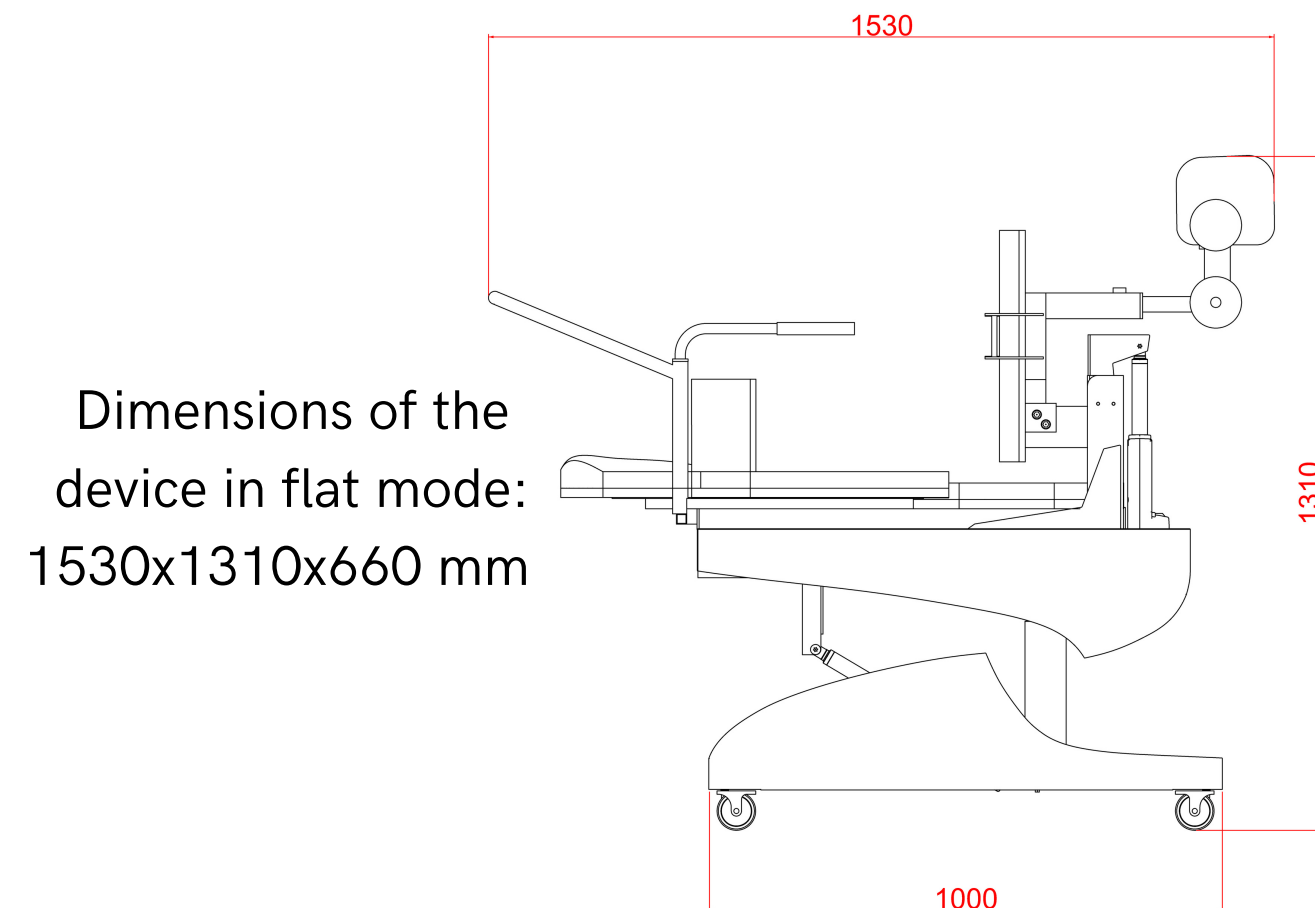
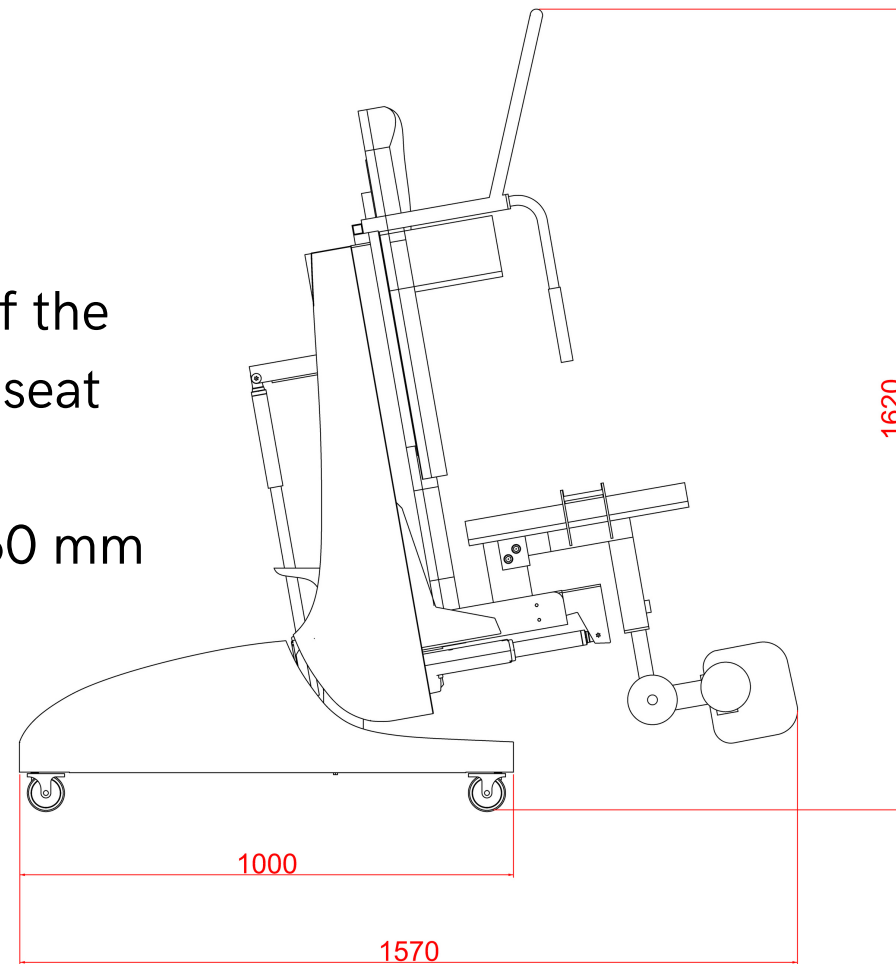
The angle of rotation = 45°
(weightlessness Position)



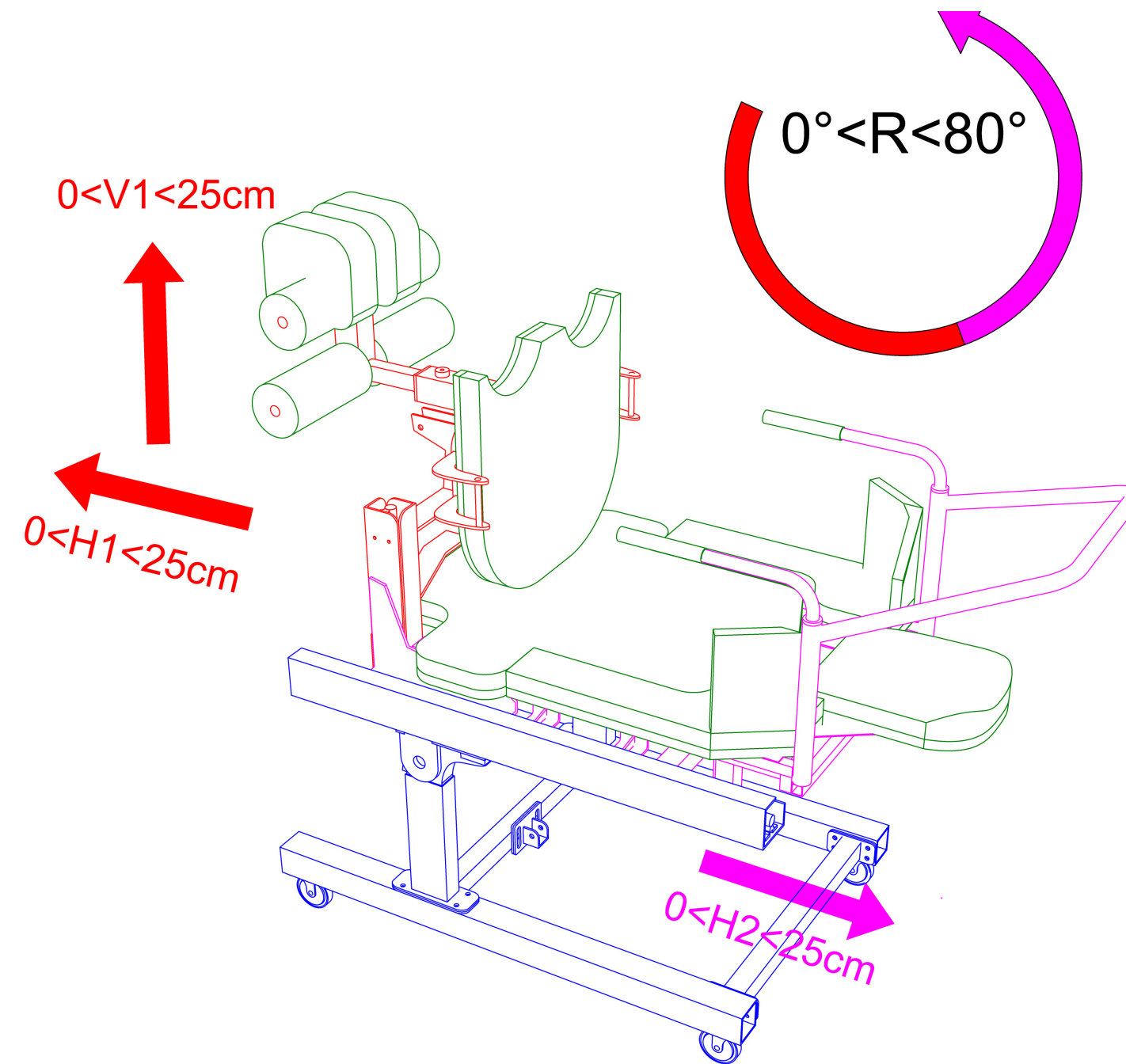
The angle of rotation= 80°
(Zero device mode)

Dimensions of the
device in the seat
mode:
1570x1620x660 mm

Device weight:
80 to 140 Kg



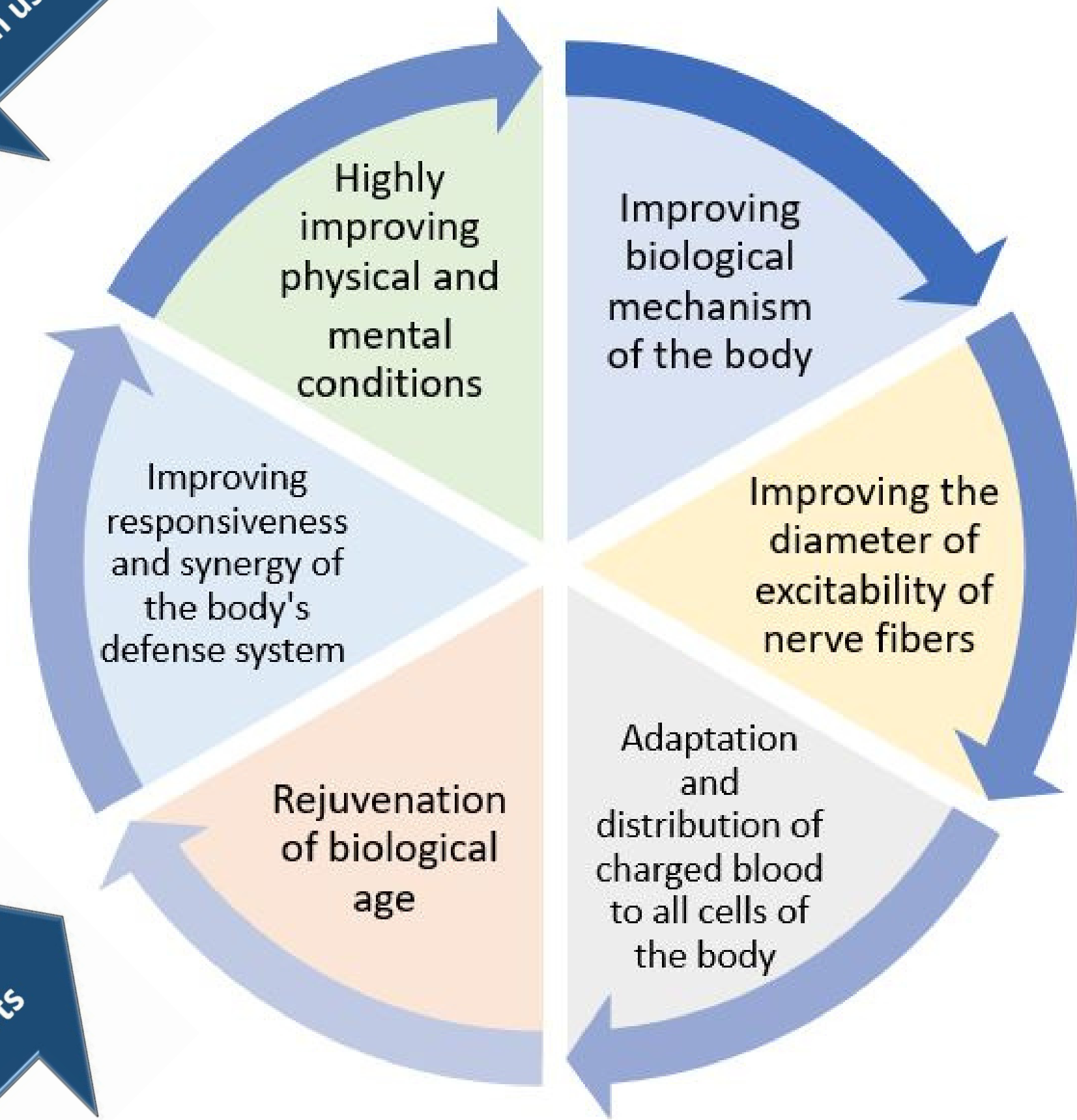
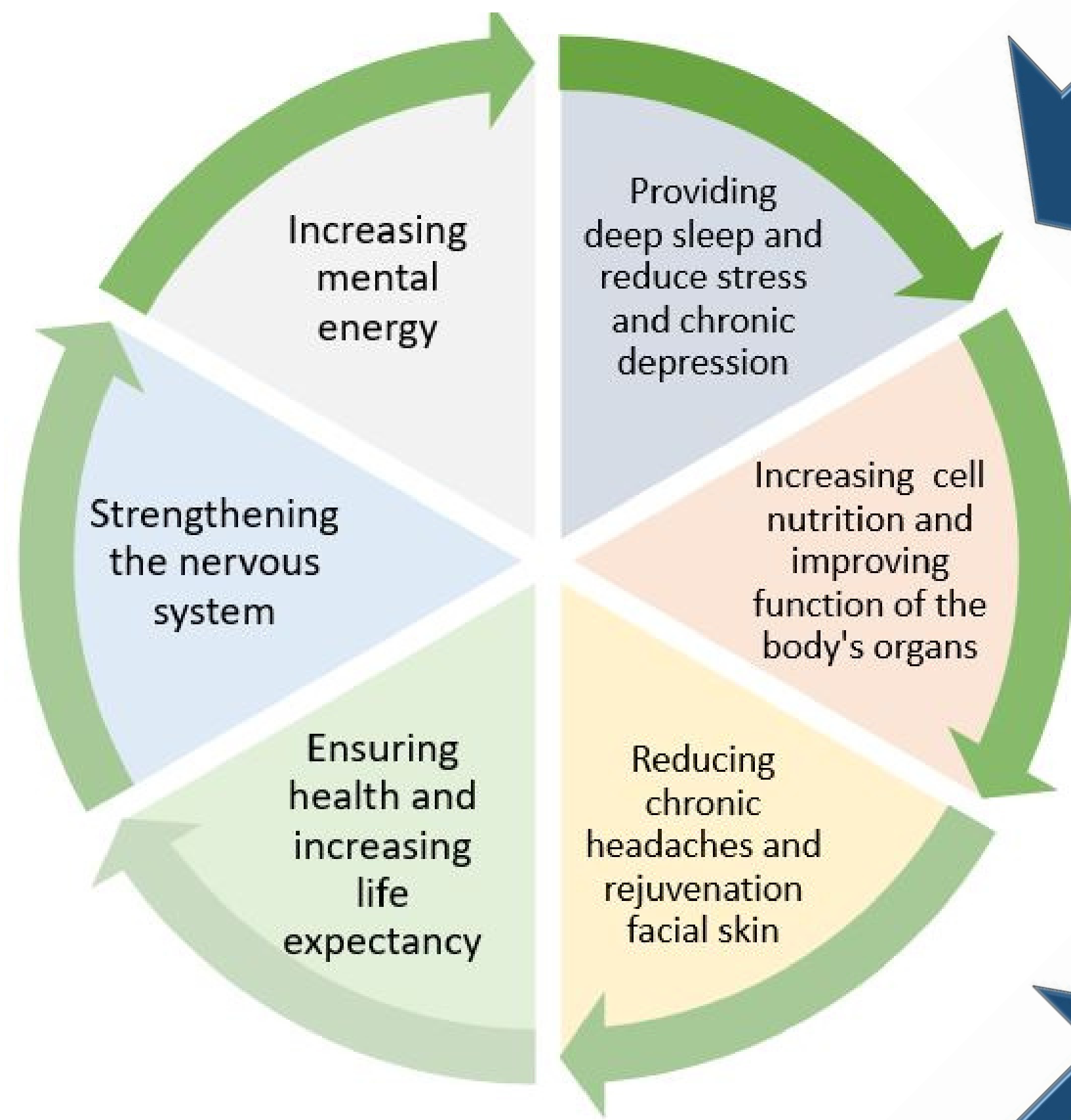
Dimensions of the
device in flat mode:
1530x1310x660 mm



Degrees of freedom and range of
motion of each degree of freedom



Feedback from experts and users

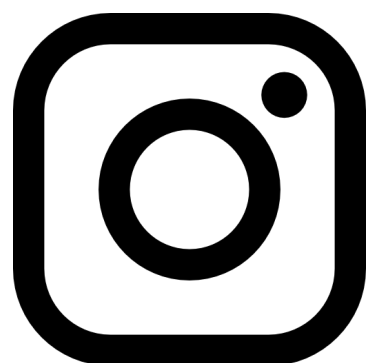




WWW.AYATCO.IR



T.ME/SPORTSCIEN



**MARKAZ_MOSHAVERE_V
ARZESHI**



**+989195059824
+982177245121**

